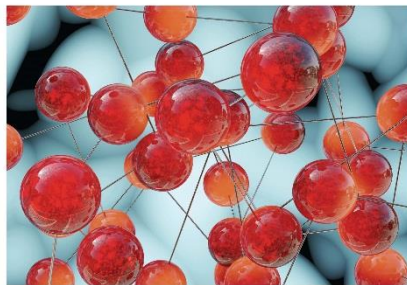


# Quantitative Structure-Property Relationships (IJQSPR)

An official publication of  
the Information Resources  
Management Association

INTERNATIONAL JOURNAL OF

## Quantitative Structure-Property Relationships



**IGI PUBLISHING**  
Publisher of IT books, journals and cases since 1988  
[www.igi-global.com](http://www.igi-global.com)

ISSN: 2379-7487; EISSN: 2379-7479

Established 2016; Published Semi-Annually

**Editor(s)-in-Chief:** Kunal Roy (Jadavpur University, India)

The **International Journal of Quantitative Structure-Property Relationships (IJQSPR)** is a new journal that will explore the latest research surrounding the topic of Quantitative Structure-Property Relationship (QSPR) models and the applications of these models across the fields of materials science, chemical engineering, pharmaceutical and medicinal chemistry, pharmacokinetics, toxicology (including ecotoxicology), and agricultural sciences, among others. The cross-disciplinary applications of QSPR models featured within IJQSPR make this journal an ideal reference source for chemists, researchers, professionals, engineers, and graduate-level students across industries.

### Individual Pricing

Print + Free E-Access: **\$280.00**

E-Access Only: **\$195.00**

### Institution Pricing

Print + Free E-Access: **\$795.00**

E-Access Only: **\$750.00**

### Topics Covered:

- Biological Applications
- Chemical Applications
- Chemical Properties
- Chemometric Modeling
- Development of New Descriptors and/or Validation Metrics
- Drug Design Applications
- Environmental Fate Modeling
- Material Property Modeling
- Molecular Modeling
- New Software Development of QSAR/QSPR Applications
- Physicochemical Properties
- Predictive Toxicology
- Property Modeling
- Risk Management Applications

### SUBMISSION INFORMATION

Prospective authors should note that only original and previously unpublished articles will be considered. Interested authors must consult the journal's guidelines for manuscript submissions at [www.igi-global.com/publish/resources](http://www.igi-global.com/publish/resources) prior to submission. All article submissions will be forwarded to the Editorial Review Board for double-blind, peer review.

All submissions and inquiries should be directed to the attention of:  
Kunal Roy, [EMAIL@EMAIL.com](mailto:EMAIL@EMAIL.com)

All manuscript to IJCINI should be sent through E-Editorial Discovery:  
<http://www.igi-global.com/calls-for-papers/JOURNAL> URL

### EDITOR-IN-CHIEF BIO

Dr. Kunal Roy is an Associate Professor in the Department of Pharmaceutical Technology, Jadavpur University, Kolkata, India. He has been a recipient of Commonwealth Academic Staff Fellowship (University of Manchester, 2007) and Marie Curie International Fellowship (University of Manchester, 2013). The field of his research interest is QSAR and Molecular Modeling. Dr. Roy has published more than 225 research papers in refereed journals. He has also coauthored QSAR related books entitled "Understanding the Basics of QSAR for Applications in Pharmaceutical Sciences and Risk Assessment" (Elsevier, 2015) and "A Primer on QSAR/QSPR Modeling: Fundamental Concepts" (Springer, 2015) and edited "Quantitative Structure-Activity Relationships in Drug Design, Predictive Toxicology, and Risk Assessment" (IGI Global, 2015). His current h-index is 30.